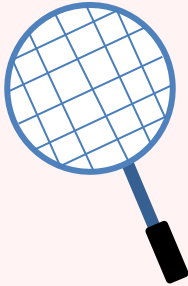


Mong-Ha Sports Centre

(First phase of opening)

Chapter of
Facilities

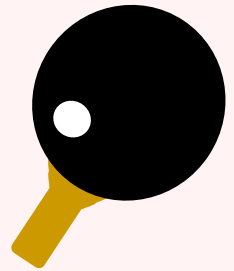
2F



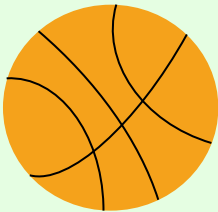
Maximum capacity per court: 6 persons
Individual advance booking: 12 courts
On-the-spot booking: 2 courts
Fee per hour: MOP 20

2F

Maximum capacity per table: 6 persons
Individual advance booking: 5 tables
On-the-spot booking: 1 table
Fee per hour: MOP 10



4F

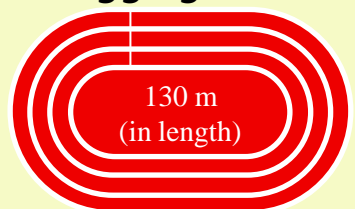


Maximum capacity per court: 20 persons
Individual advance booking: 2 courts
Group booking: 1 court
Fee per hour: MOP 200

R

On-the-spot usage
Time per session: 2 hours
Maximum capacity per session:
50 persons
Free to use

Jogging track



Mong-Ha Sports Centre (First phase of opening)

Chapter of Tickets Purchase

Advance booking tickets



- Daily operating time for advance booking: 8:30 am to 12:00 am
- Online booking can be made via Sports Bureau website or mobile application
- Should hold membership of Sport Easy
- One of the facilities can be booked for the next 7 days in advance
- Each user can only make booking for one session

On-the- spot tickets

Each person
can
purchase
tickets twice
per day

- Users should queue up onsite for purchase of tickets upon presentation of Sport Easy Card or ID Card
- Tickets sale commence 15 minutes prior to the start of each session
- Each user can only purchase one ticket at one time



Leisure sport zone

- Open for residents' instant use
- Registration at Reception for a non-fee charging QR Code ticket receipt
- One ticket per person for entry and exit at the designated time

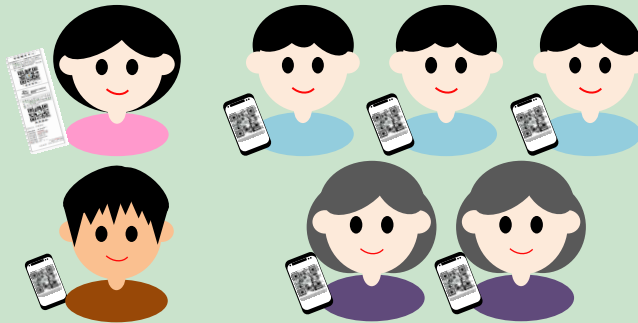
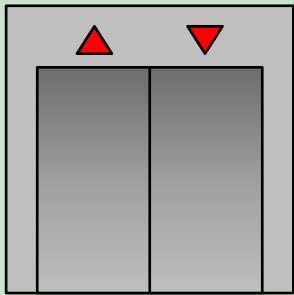
Mong-Ha Sports Centre

(First phase of opening)

Chapter of Usage

Entry will be granted 30 minutes prior to the time as listed on the ticket receipt

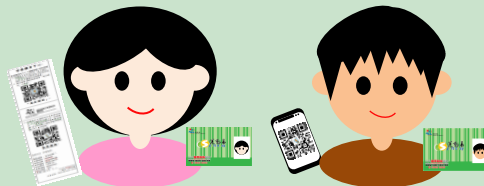
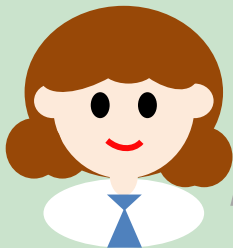
The hirer and accompanying users can access to the corresponding Floor, 30 minutes prior to the listed time upon presentation of the "Entry and Exit of Facilities" QR Code (copy or screenshot) on the ticket receipt.



Entry and Exit of Facilities

Obtaining of the facilities 15 minutes prior to the time as listed on the ticket receipt

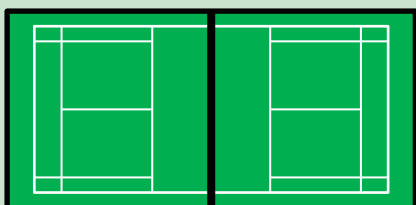
The hirer can access to the corresponding Floor and obtain the facilities in person 15 minutes prior to the listed time upon presentation of the "Obtain Facilities" QR Code and the identification document on the ticket receipt for verification.



Obtain Facilities

After obtaining the facilities by the hirer

The hirer and accompanying users can enter or exit with the "Entry and Exit of Facilities" QR Code (copy or screenshot) on the ticket receipt.



Entry and Exit of Facilities